

Missoma

Ring Size Conversion Chart

You can measure your ring size a number of ways: in UK (alphabetically) or US sizes (numerically), or from the Internal Diameter or Circumference. Depending on how you have measured your ring size, please see the conversion chart below.

Inside diameter		Inside circumference		Sizes	
(in)	(mm)	(in)	(mm)	United States	United Kingdom
0.57	14.48	1.79	45.5	3½	G
0.578	14.68	1.82	46.1	3¾	G½
0.586	14.88	1.84	46.8	4	H
0.594	15.09	1.87	47.4	4¼	H½
0.602	15.29	1.89	48.0	4½	I
0.61	15.49	1.92	48.7	4¾	J
0.618	15.70	1.94	49.3	5	J½
0.626	15.90	1.97	50.0	5¼	K
0.634	16.10	1.99	50.6	5½	K½
0.642	16.31	2.02	51.2	5¾	L
0.65	16.51	2.04	51.9	6	L½
0.658	16.71	2.07	52.5	6¼	M
0.666	16.92	2.09	53.1	6½	M½
0.674	17.12	2.12	53.8	6¾	N
0.682	17.32	2.14	54.4	7	N½
0.69	17.53	2.17	55.1	7¼	O
0.698	17.73	2.19	55.7	7½	O½
0.706	17.93	2.22	56.3	7¾	P
0.714	18.14	2.24	57.0	8	P½
0.722	18.34	2.27	57.6	8¼	Q
0.73	18.54	2.29	58.3	8½	Q½
0.738	18.75	2.32	58.9	8¾	R

Missoma

About Finger sizing

Please bear in mind the following:

- If you measure your finger and find out that your size is in between two different sizes, you should pick the larger size.
- Remember that due to temperature changes, your finger may shrink or expand. In the cold, fingers tend to shrink, causing a smaller measurement. In the heat, your fingers swell, which can make for a larger measurement. Take the temperature into account when sizing your finger.
- Large knuckles should wear a slightly loose ring, while slimmer knuckles will require a tighter ring.
- Finally, every ring size chart will vary slightly in its standards. We all wish there was one internationally recognised standard, but unfortunately there is not. On one chart a diameter of 20.65mm may equal a size 10 $\frac{3}{4}$; on another chart, a similar number, such as 20.62mm, may read out as size 10. Therefore, any previous measurement you may have been given by other jewellers may have been measured on a different system and can vary slightly.

How to Measure your Ring Size

The two simplest ways to gauge your ring size are by either circumference or diameter.

1. The circumference of a ring measures the length around the circle. To measure: wrap a narrow strip of paper comfortably around your finger, mark the end, and measure the distance.
2. The diameter of a ring measures the distance across the middle inside, which can be used to gauge your ring size from a ring you are already wearing.

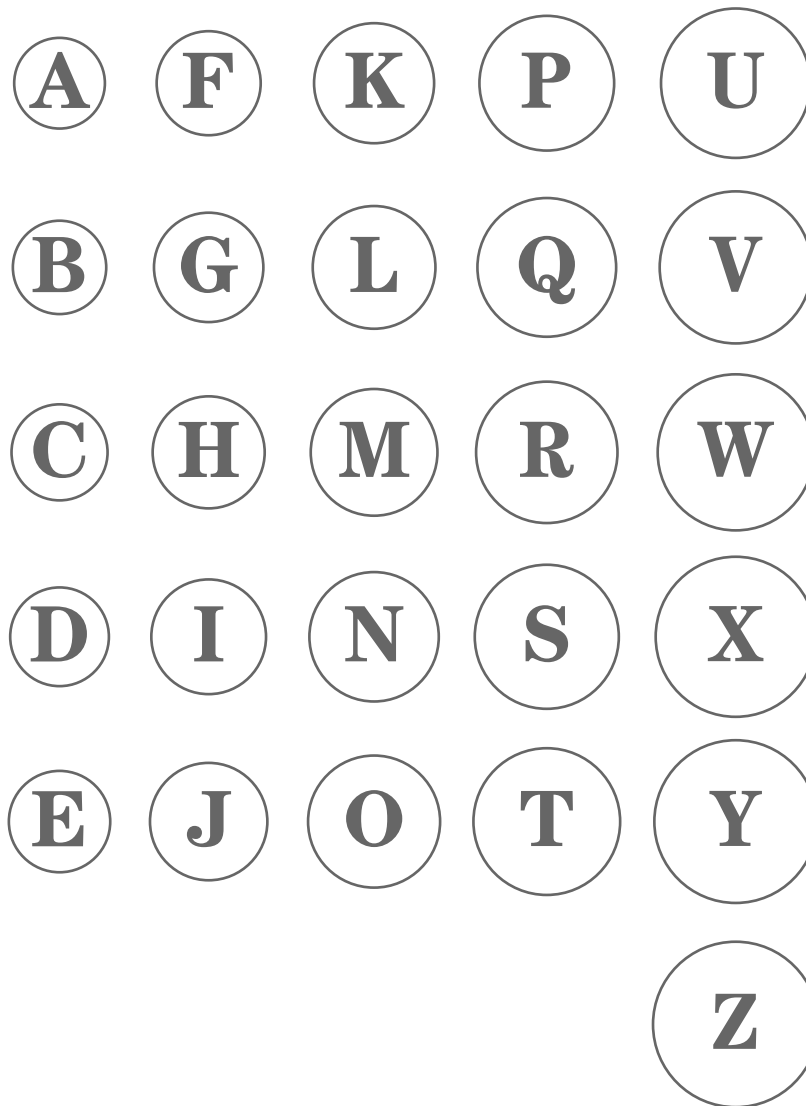
Missoma

Measure Your Ring Size

Print this page and measure the line on the right. It must be exactly 20cm for accurate results.

Compare the inside of one of your own rings which is a comfortable fit on your finger against the sizing chart to ascertain your correct ring size.

Set your printer to 100% for optimum results.



0cm

20cm

Missoma

Measure Ring Size With a Finger Size Strip

To create your own ring sizer, print and cut the strip below. Insert the narrow end of the sizer through slot 'A'. With numbers on the outside, place the loop around your finger, and pull until the fit is snug but comfortable.

In order to print the ring sizer, be sure that your printer is set to 100%. Make sure that you have not reduced the print size in your printer 'page setup' area. You can verify that the sizer printed correctly by measuring it with a ruler; it should measure from A to B: 3 1/2 inches long. Once you have printed the sizer, follow these directions to find your ring size:

1. Cut out the ring sizer
2. Cut a slit for Slot "A"
3. With the numbers facing out, wrap the sizer around the finger where the ring will be worn.
4. Pull the pointed end Tab "B" through Slot "A" until the sizer is snug, making sure to allow size for the knuckle.
5. The number aligned with Slot "B" is your ring size.
6. If the measure lands between two numbers your size is a half size
Ex: Between 5 and 6 ring size: 5.5. If half sizes are not available, order the next largest size.

